

NEC Interstate 10 and Pebble Creek Parkway

Goodyear, Arizona



DEMOGRAPHICS



Average Household Income

3 Miles:	\$69,267
5 Miles:	\$64,927
7 Miles:	\$63,057

Population

3 Miles:	22,074
5 Miles:	52,395
7 Miles:	97,041

2008 Projection

3 Miles:	28,230
5 Miles:	70,585
7 Miles:	115,559

Source: 2004 AGS



GOODYEAR CENTERPOINTE

AMENITIES



- Approximately 275,000 SF of power center retail to serve the west valley, including Goodyear, Avondale and Buckeye
- Highly desirable trade area; accross from Westcor Regional Mall and Power Center
- Anchor, Major, Pads and Shop Space Available. Freeway visibility and monument pylon signage available
- Deal structures include lease, ground lease or build-to-suit



POWER CENTER RETAIL SPACE

Michael Clark

Senior Associate
 T 602.682.6075
 C 602.717.6717
 F 602.682.6001
 michael.clark@staubach.com

Mike Kumelski

Senior Associate
 T 602.682.6025
 C 602.628.9328
 F 602.682.6001
 mike.kumelski@staubach.com

Ed Beeh

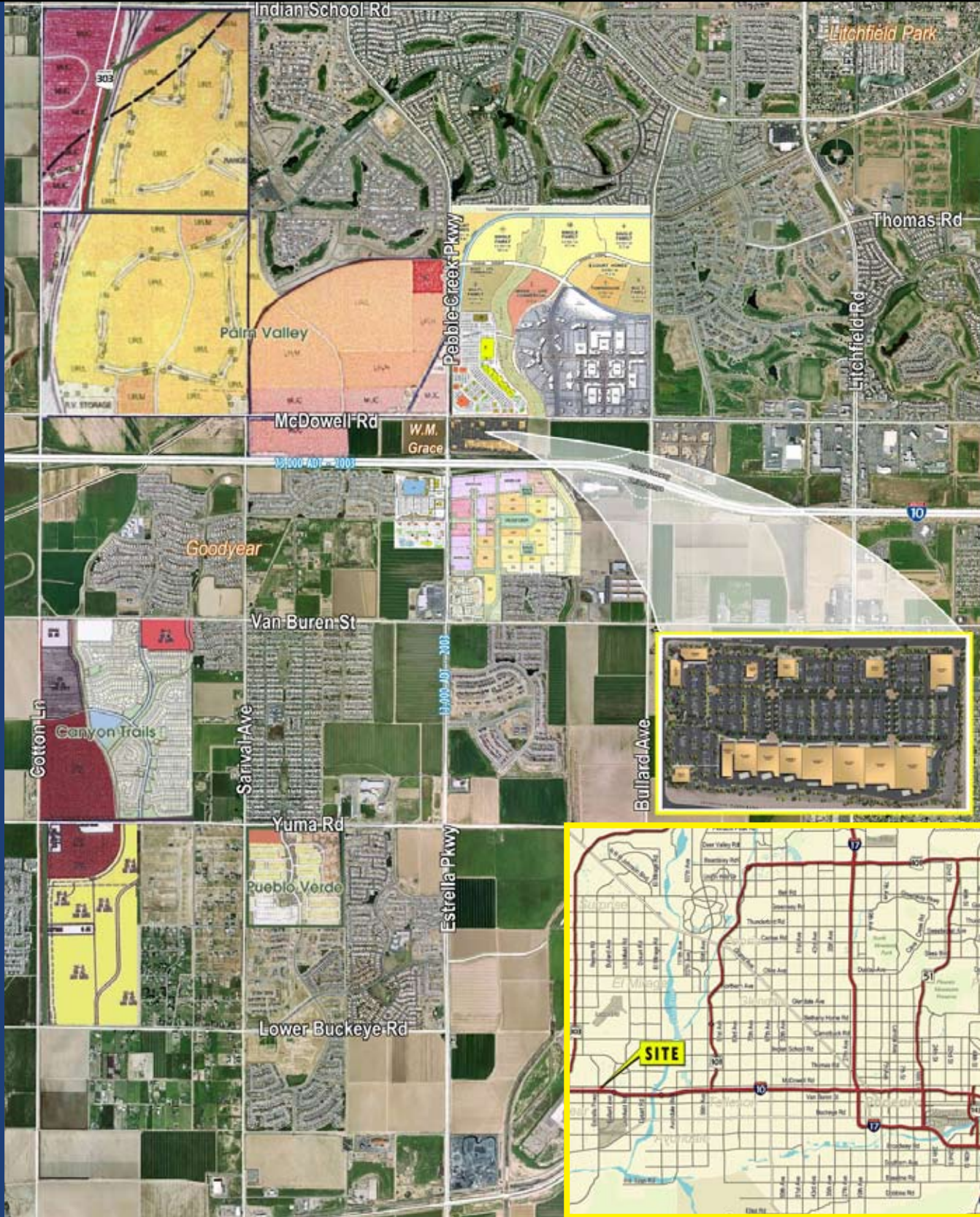
Senior Vice President
 T 602.682.6040
 C 602.980.3553
 F 602.682.6001
 ed.beeh@staubach.com

Staubach / 2398 E. Camelback Road / Suite 210 / Phoenix, AZ 85016
 T 602.682.6000 / F 602.682.6001 / www.staubach.com

Copyright 2005. All Rights REserved. No part of this work may be reproduced or distributed without written consent. No warranty or representation, expressed or implied, is made as to error, omissions, or other conditions.

NEC Interstate 10 and Pebble Creek Parkway

Goodyear, Arizona



Michael Clark
Senior Associate
T 602.682.6075
C 602.717.6717
F 602.682.6001
michael.clark@staubach.com

Mike Kumelski
Senior Associate
T 602.682.6025
C 602.628.9328
F 602.682.6001
mike.kumelski@staubach.com

Ed Beeh
Senior Vice President
T 602.682.6040
C 602.980.3553
F 602.682.6001
ed.beeh@staubach.com

Staubach / 2398 E. Camelback Road / Suite 210 / Phoenix, AZ 85016
T 602.682.6000 / F 602.682.6001 / www.staubach.com

Copyright 2005. All Rights REserved. No part of this work may be reproduced or distributed without written consent. No warranty or representation, expressed or implied, is made as to error, omissions, or other conditions.